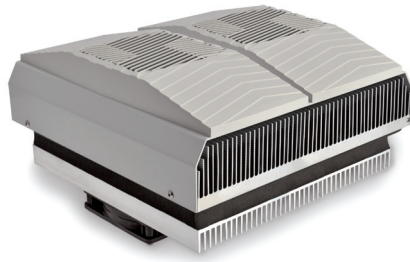


# Comparison Chart of Cooling Systems: Thermoelectric vs Compressor



	THERMOELECTRIC UNITS TCU SERIES	COMPRESSOR AIR CONDITIONERS KCU SERIES
DESIGN	Solid-state	Electro-mechanical
ECOLOGICAL IMPACT	Contain no pollutants or gases	Contain refrigerant (R134a)
SIZE	Compact	Moderate to large size
MAINTENANCE	Virtually free - No moving parts (except the fan)	Low – No filters Once a year compressed air over capacitor
TEMPERATURE	Max. ambient temperature 158°F	Max. ambient temperature 131°F
CAPACITY	Limited cooling rates (171-682 BTU/h)	Wide range of cooling rates (1,540-12,980 BTU/h)
ORIENTATION	Can be used in any orientation (top, vertical, horizontal)	Compressor requires unique orientation. Side or top installation
MOUNTING	Partially recessed	Partially recessed, recessed, external and total external
POWER	AC and DC voltages	AC voltages
HEATING OPTION	Yes - reversible process	No
CONDENSATION	Optional drip trays	None - Pre-set internal thermostat at 95°F avoid the risk of condensation
APPROVAL	CE	CE; cURus